

TELOS PROJECT CROSSROAD INSTITUTE

A "BALCONY VIEW" OF COFFEE HOUR

This exercise will give your parish a visual picture of how young adults fit into your fellowship time and spaces after the Sunday Divine Liturgy. Remember to include those engaged in tasks in addition to those relaxing and enjoying fellowship. If there are other areas of your building or grounds where there is significant activity after Divine Liturgy, include those in your map.

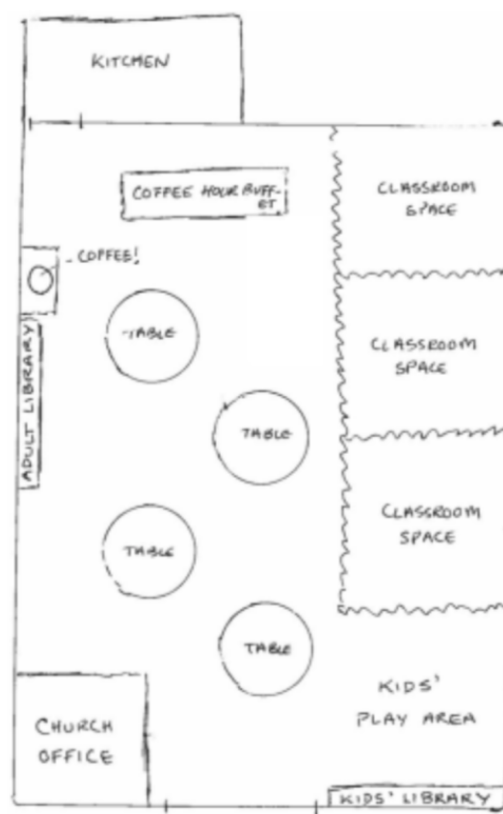
Feel free to tailor this to fit your circumstances—and let us know what you do! We are constantly tweaking our materials in order to make them as useful as possible.



Sketch your coffee hour space as if from above.

No need for perfection, but include all the areas in use during your regular fellowship time.

Example:



TELOS PROJECT

CROSSROAD INSTITUTE



On Sunday after Divine Liturgy, position yourself where you can easily see the entire coffee hour space. Walk around if you need to.

Mark on your map the locations of young adults and make note of...

- when young adults arrive & when they leave
- where they sit/stand
- whom they sit/stand/talk with
- if they eat or drink
- if they serve



Repeat this exercise **over two weeks**. Have different, designated parishioners take turns doing this, so you capture a variety of perspectives.

At a follow-up meeting, review your map & notes

1. What patterns do you see?
2. Do these patterns make sense to you? Is there anything surprising about them?
3. What challenges do you see?
4. What possibilities do you see?

Share your observations with your parish priest and other parish leadership; continue the conversation of how to better integrate young adults into your community!

If your use of this exercise provokes particularly interesting or challenging conversation in your community, we'd love to hear about it. Likewise, we are eager for any feedback on how this exercise might be improved. Please send any feedback or suggestions to your Telos Coach.

Work Page

Parish Name: _____

TELOS
PROJECT
CROSSROAD INSTITUTE